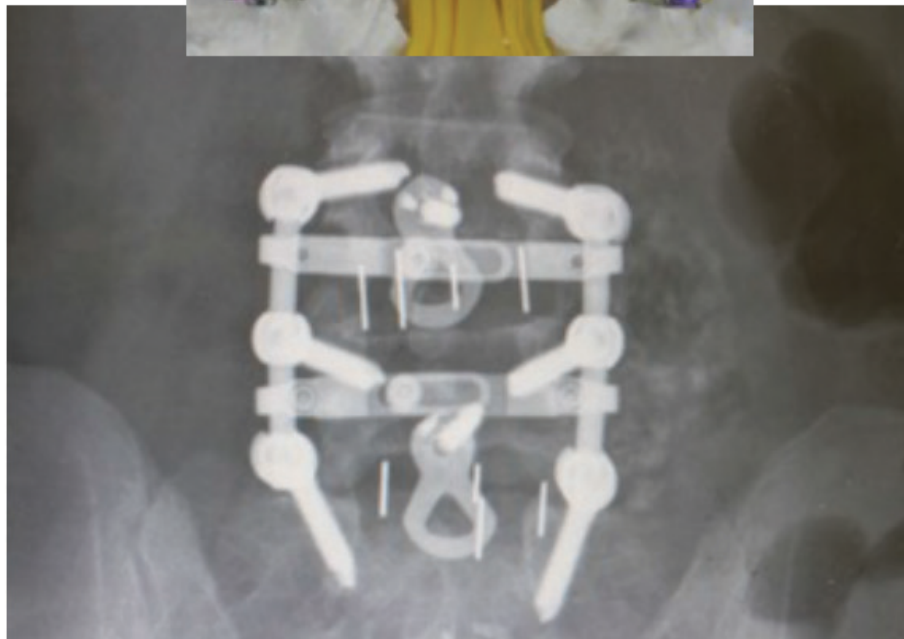
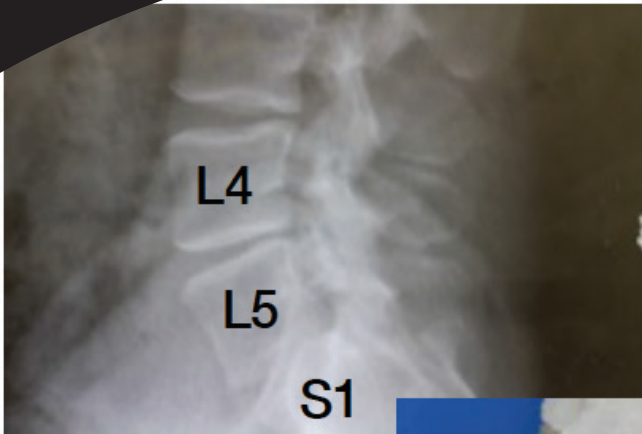


2 Level: L4/L5, L5/S1 360 Fusion Diamondback® Pedicle Screw System & Boa Constrictor® Cross-Link

45 y/o WF with DDD and Diskogenic Pain

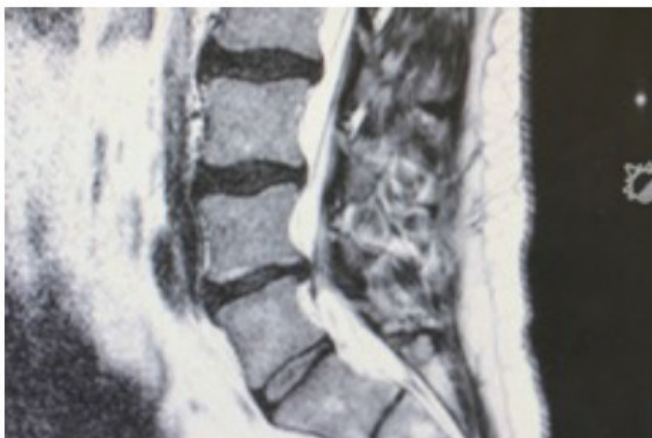


2 Level: L3/L4, L4/L5 360 Fusion Diamondback® Pedicle Screw System & Boa Constrictor® Cross-Link

48 y/o WM with DDD and Diskogenic Pain



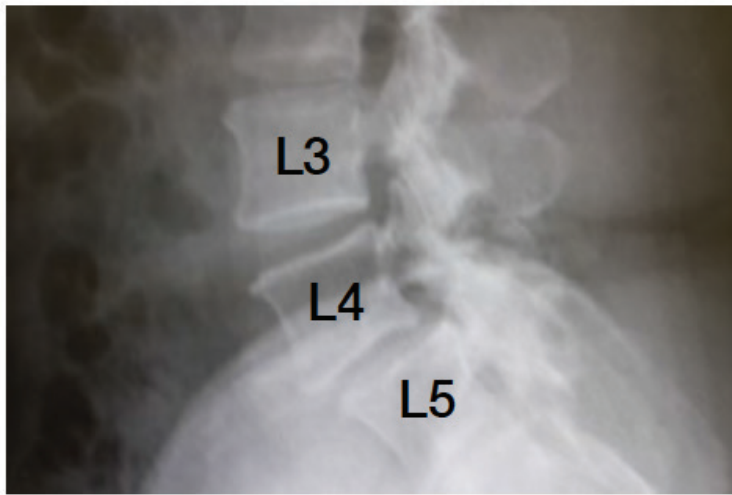
Fang Plate placed per vascular anatomy



2 Level: L3/L4, L5/S1 360

Diamondback® Pedicle Screw System & Boa Constrictor® Cross-Link

55 y/o WF with DDD and Spondylolithesis

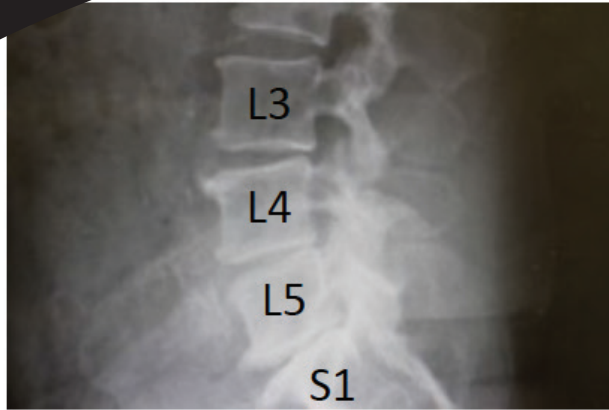


Pre-Op → Post-Op



3 Level: L3/L4, L4/L5, L5/S1 Diamondback® Pedicle Screw System & Boa Constrictor® Cross-Link

48 y/o WM with Multi-Level Lumbar Stenosis



3 Level: L3/L4, L4/L5, L5/S1

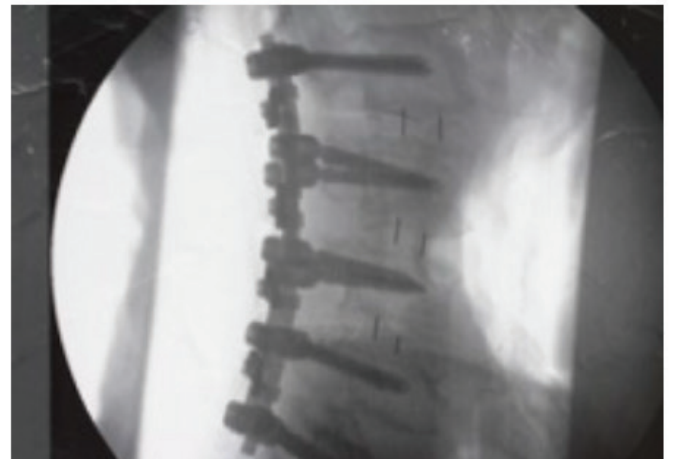
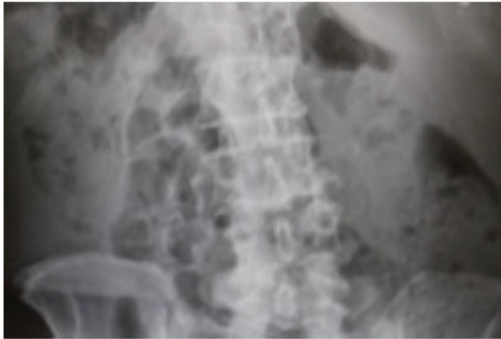
Diamondback® Pedicle Screw System & Boa Constrictor® Cross-Link

67 y/o WM with DDD & Stenosis



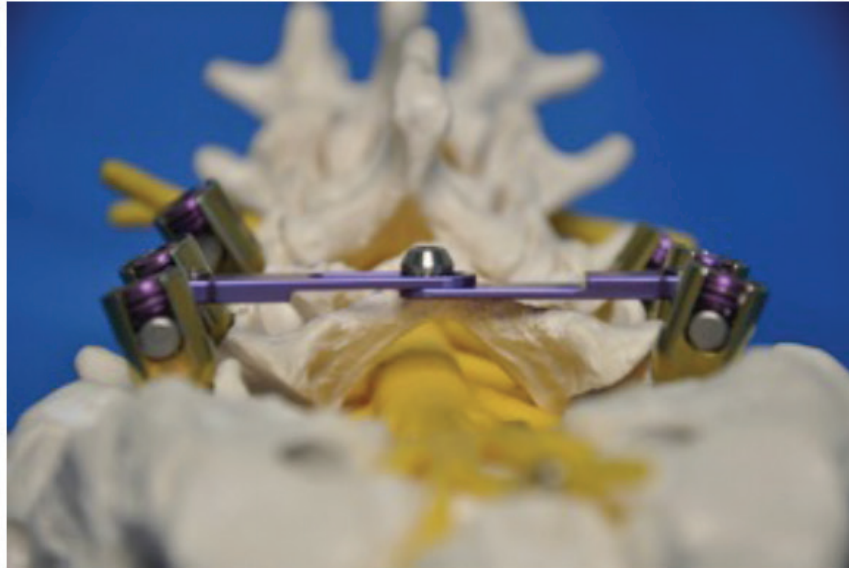
4 Level: L2/L3, L3/L4, L4/L5, L5/S1 Diamondback® Pedicle Screw System & Boa Constrictor® Cross-Link

71 y/o with DDD & Multi-Level Stenosis



5 Level: L1/L2, L2/L3, L3/L4, L4/L5, L5/S1 Diamondback® Pedicle Screw System & Boa Constrictor® Cross-Link

72 y/o WM with DDD and Multi-Level Stenosis



Lumbar Revision: L1/L2, L2/L3, L3/L4, L4/L5, L5/S1, S1/S2 Diamondback® Pedicle Screw System & Boa Constrictor® Cross-Link

75 y/o with DDD & Post-Laminectomy Syndrome



Luque rectangle

